

ADSPS2 Dye-Sublimated Drawstring Accessory Bag

Print File // Actual size

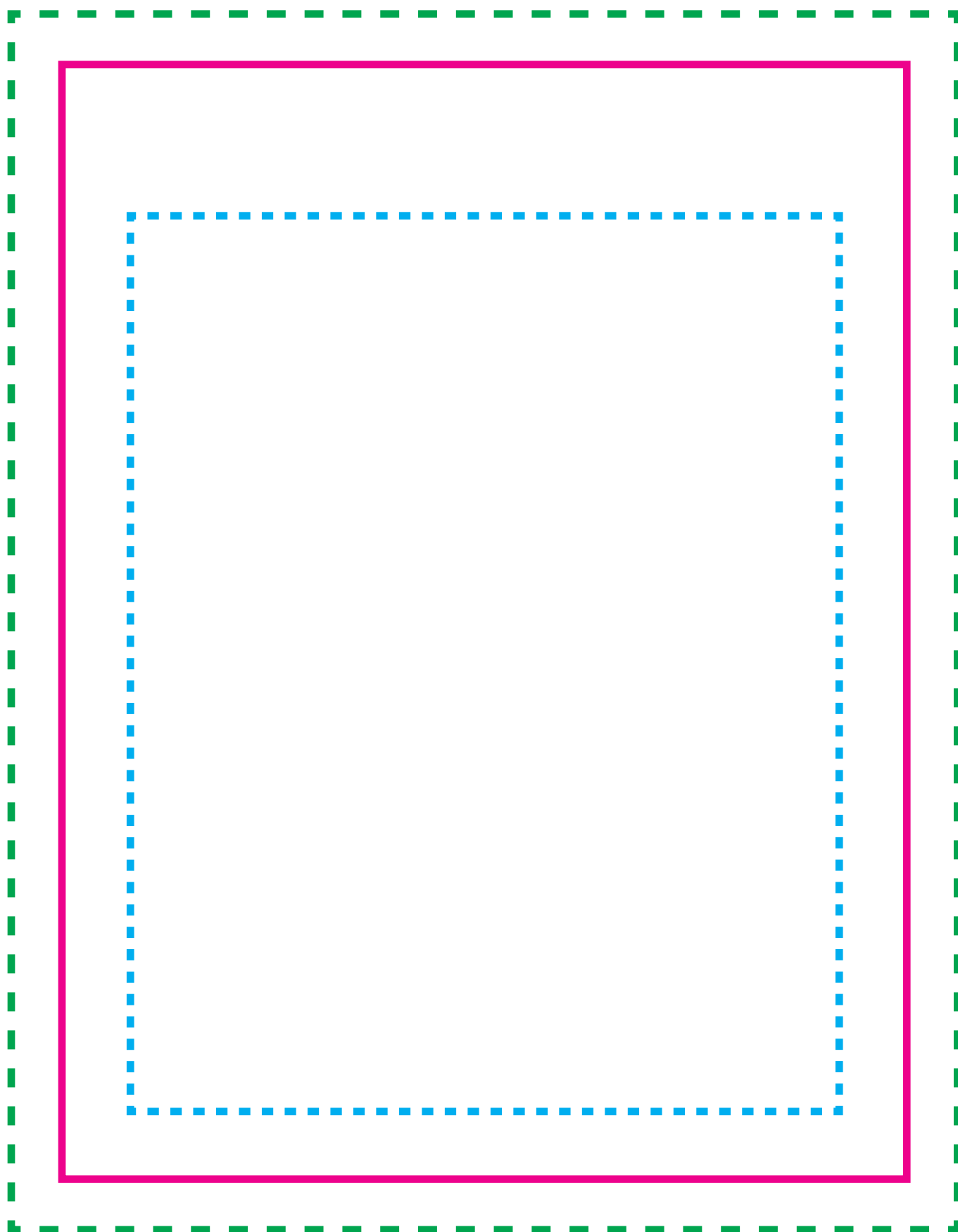
Please Note: All colors of ingredients and item names can be changed to match the colors of the imprints as you desire, but will be black or white will be standard. Black ingredients do not show up well against darker colored background, we recommend that you change them to white. The ingredients must be readable and legible due to FDA regulation and should be a minimum of 3.5pts in size. If you have a background pattern or picture, please take this into consideration. **Transparencies do not print!** If your art includes a transparency you will need to print in CMYK colors, and the art will need to be converted to raster in order for it to print. If you are printing white on a clear label it must be vector, unless you can submit the raster white in 1% Yellow in CMYK. Recommendations 1- include a white or different color box underneath the ingredients entirely. 2- add a white or black outline (it must be thick enough to print well). 3 - Change the color of them to white or black, or match a darker or lighter color from your artwork in order to make them visible. Note, we will make one of the above changes on your proof should it not be done when artwork is submitted. A small drop shadow does not print well, we will not use this option when it is provided.

Bleed Area (background color/pattern): 7" W x 9" H

Label Size/Cutline: 6.25" W x 8.25" H

Imprint Area: 5.25" W x 6.625" H

FRONT 100%



BACK 100%

